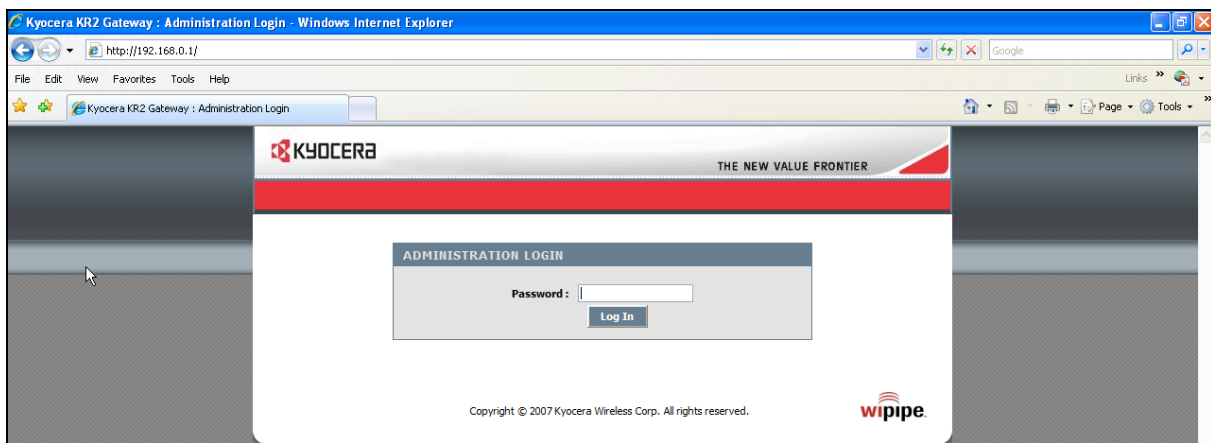


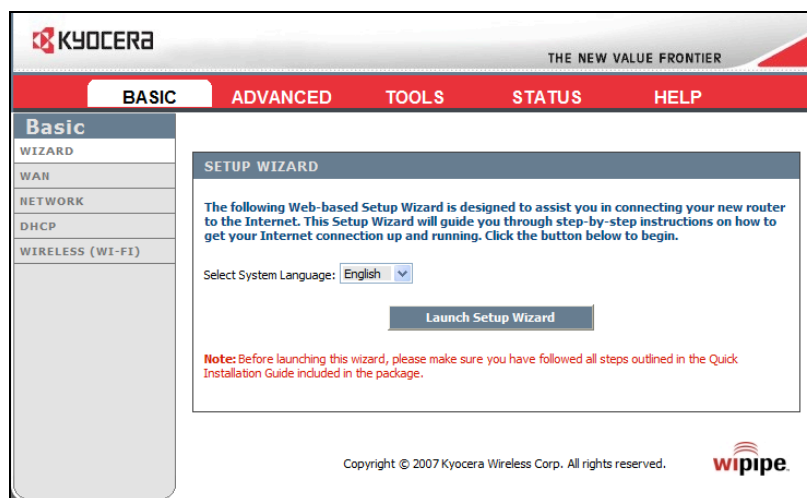
Setting up the Kyocera KR2 Mobile Router with the Hele USB Modem

Important Install and activate your Hele USB modem directly in your computer before setting up the Kyocera router.

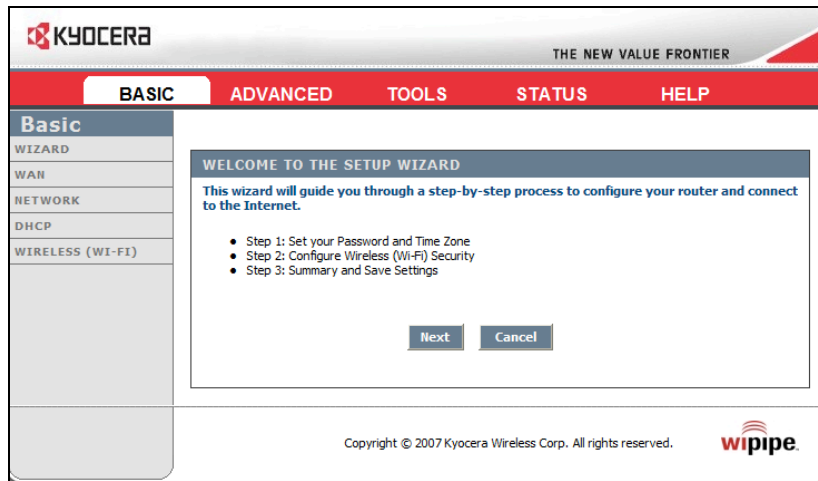
1. Insure that the WLAN switch on the back of the router labeled ON/OFF is set to ON.
2. Connect the supplied LAN cable from the yellow LAN port #1 on the back of the router to the LAN connector on your computer.
3. DO NOT plug the Hele card into the router yet.
4. Plug the AC power supply into the back of the router and then into a wall outlet.
5. Start your computer.
6. Open your web browser, and type <http://192.168.0.1> into the address bar. This will take you to the KR2 Web Interface and the Admin/Setup Pages.



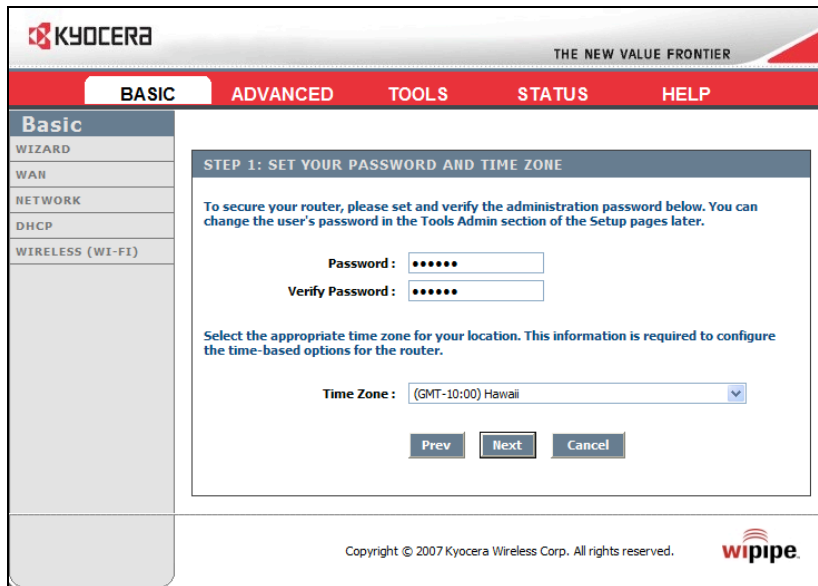
7. Enter the KR2 password. The password is the *last 6 characters of the KR2's WLAN MAC ID*. This information is located on the product label located on the bottom of the KR2.
8. Click on Log In. The Setup Wizard screen appears.



9. On the Setup Wizard screen, click on Launch Setup Wizard.



10. On the Welcome screen, click Next.



11. You can accept the default password (same as the Administrator Login) or change your password here and reenter to verify.

12. Change the time zone to Hawaii.

13. Click Next.

KYOCERA THE NEW VALUE FRONTIER

BASIC ADVANCED TOOLS STATUS HELP

Basic
WIZARD
WAN
NETWORK
DHCP
WIRELESS (WI-FI)

STEP 2: CONFIGURE WIRELESS (WI-FI) SECURITY

Your wireless network needs a name so it can be easily recognized by wireless clients. For security purposes, it is highly recommended to change the pre-configured network name.

Wireless (Wi-Fi) Network Name (SSID):

In order to protect your network from hackers and unauthorized users, it is highly recommended you choose one of the following wireless network security settings.

There are several levels of wireless security. The level you choose depends on the security features your wireless adapters support.

Require User Login Check this if you want users to be required to login before they use the internet.

WPS Select this option if your wireless device supports Wi-Fi Protected Setup (WPS)

BEST Select this option if your wireless adapters SUPPORT WPA2

BETTER Select this option if your wireless adapters SUPPORT WPA or WPA2

GOOD Select this option if your wireless adapters SUPPORT WEP

NONE Select this option if you do not want to activate any security features

14. You can either leave the default SSID or change it to whatever you want. This is the name that will appear when you View Available Wireless Networks.
15. It is recommended to select a security level of Better (WPA or WPA2) for best security and compatibility. The system will choose the higher of the two securities automatically. If you choose NONE there may be a problem getting the Hele card to communicate with the router (EVDO light on router will stay yellow).
16. Click Next.

KYOCERA THE NEW VALUE FRONTIER

BASIC ADVANCED TOOLS STATUS HELP

Basic
WIZARD
WAN
NETWORK
DHCP
WIRELESS (WI-FI)

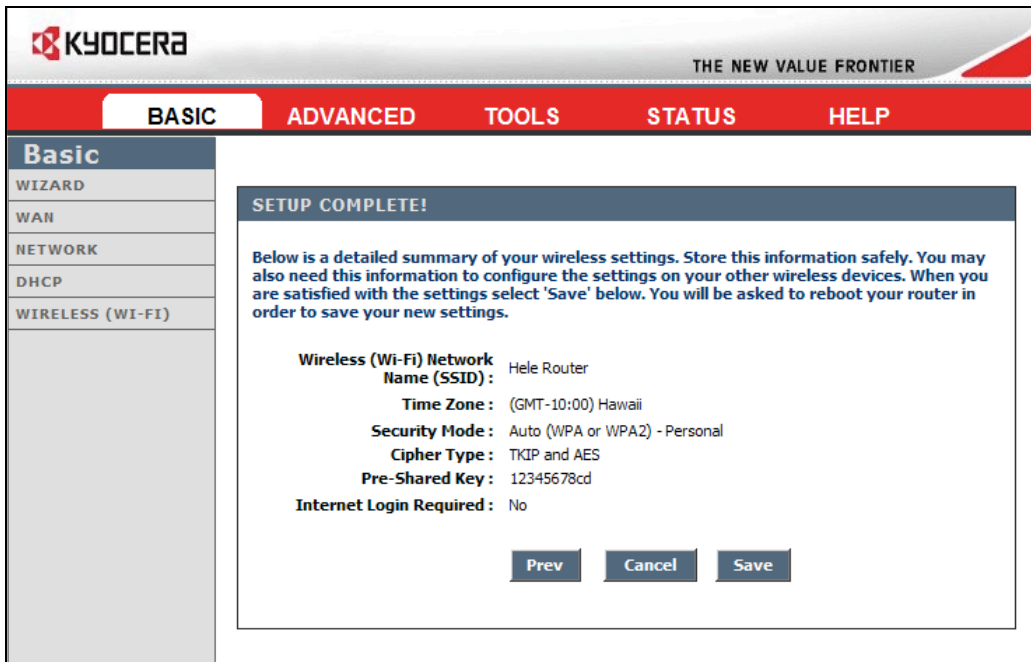
SET YOUR WIRELESS SECURITY PASSWORD

You have selected your security level - you will need to set a wireless security password.

Wireless Security Password : (8 to 63 characters)

Note: You will need to enter the same password as keys in this step into your wireless clients in order to enable proper wireless communication.

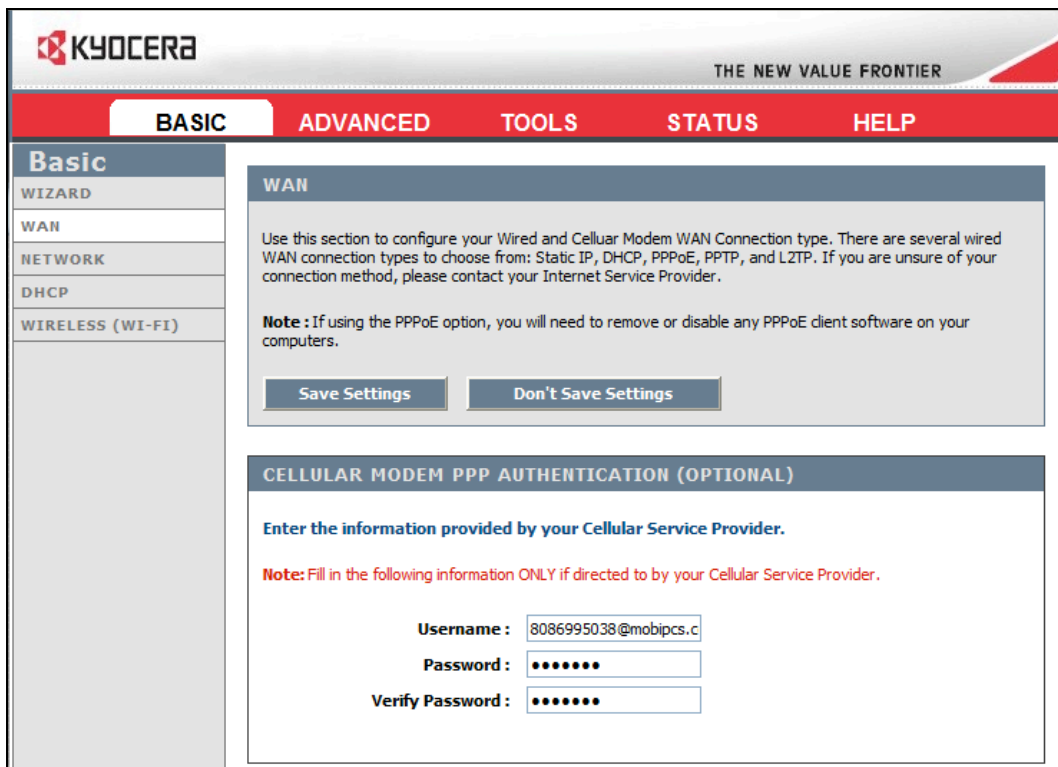
17. For Wireless Security Password enter 8 to 63 characters. (no spaces). ****IMPORTANT - WRITE DOWN THIS PASSWORD! ****
18. Click Next.



19. Your setup is complete! Double check your SSID and pre-shared key.
20. Save the settings.
21. When prompted to reboot – select **Reboot Later**.

Setting up for your Hele USB Modem

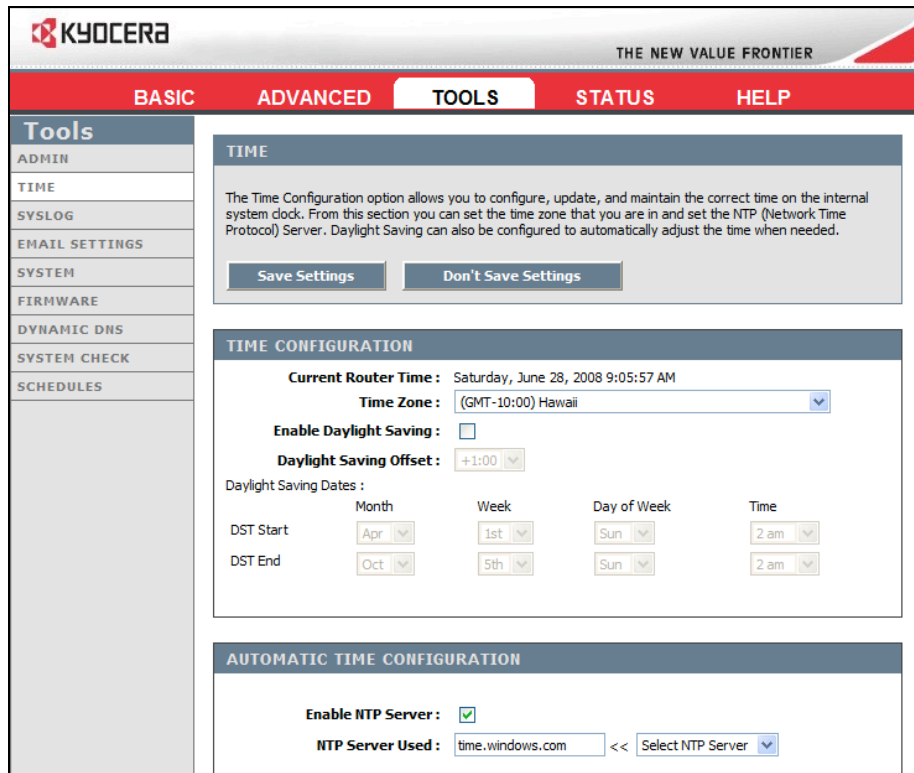
1. Click on the Basic tab on the top and then the WAN tab on the left.



The screenshot shows the Kyocera web interface for configuring a Hele USB Modem. The top navigation bar includes the Kyocera logo and the slogan "THE NEW VALUE FRONTIER". Below this is a red navigation bar with tabs for "BASIC", "ADVANCED", "TOOLS", "STATUS", and "HELP". The "BASIC" tab is selected, and a left sidebar contains sub-tabs: "Basic", "WIZARD", "WAN", "NETWORK", "DHCP", and "WIRELESS (WI-FI)". The "WAN" sub-tab is selected, displaying the "WAN" configuration page. This page includes instructions on configuring Wired and Cellular Modem WAN Connection types, a note about PPPoE, and two buttons: "Save Settings" and "Don't Save Settings". Below this is the "CELLULAR MODEM PPP AUTHENTICATION (OPTIONAL)" section, which prompts the user to enter information from their Cellular Service Provider. It includes a note and three input fields: "Username" (containing "8086995038@mobipcs.c"), "Password" (masked with dots), and "Verify Password" (masked with dots).

2. Type in the Username of your Hele USB modem which is <Your MDN>@mobipcs.com, where <Your MDN> is the 10 digit phone number of the card which should be written in on the back of your Hele brochure.
3. Type in the Password *mobipcs*. Verify the password by typing in again.
4. Click on Save Settings at top of page.
5. When the message displays telling you to reboot, click on Reboot Later.

- Click on the Tools tab at the top of the screen, then click on the Time tab on the left.



- To set the time so it automatically updates, in the Under Automatic Time Configuration area, select Enable NTP Server.
- Click on the pull down list for "Select NTP Server" and select time.nist.gov.
- Click on Save Settings.
- When the message displays telling you reboot is needed, click on **Reboot Now**.
- After your router reboots, close down the internet browser.
- Remove the power plug from the back of the router.
- Remove the LAN cable from computer and router.
- Plug Hele USB modem into back of router.
- Plug power plug back into back of router. Give the router about 30 seconds to fully initialize. The EVDO light on the router will turn green and the WLAN light will be steady green.

Connecting to your router (Windows Operating System)

- On your computer, right click on your Wireless Connection icon in the Task bar on the bottom right of your screen and View Available Wireless Networks. You may have to click on "Refresh network list" before your new router SSID appears.
- If it shows that you are already connected to a wireless network you must click on it and then click Disconnect.
- Click on your new router SSID
- Click Connect. The first time any computer connects to the router wirelessly, it will ask for the wireless security password (network key) to be entered and then entered again to confirm.
- The wireless network should now say "Connected".
- Open your internet browser to confirm operation.

Connecting to your router (Mac Operating System)

1. On your computer, click on your AirPort icon in the upper right of your screen. If AirPort is off, click on “Turn AirPort On”. It may take about one minute for the router and card to be initialized and appear.
2. Click on your new router SSID
3. The first time any computer connects to the router wirelessly, it will ask for the wireless security password (network key) to be entered.
4. The AirPort icon should now be black indicating it is connected.
5. Open your internet browser to confirm operation.

Connecting additional devices

If you want to connect other devices through your router, such as printers, game boxes, TiVo, etc. follow the instructions that come with that device.

Additional Help

Refer to the included QuickStart Guide for additional information. For information on the advanced features on the router, go to the Help tab on the router Administration page. You can always get to the Administration page by connection wirelessly or wired to the router, opening your web browser, and enter <http://192.168.0.1> into the address bar, and entering your KR2 password. For FAQs, firmware updates, and additional support information, please visit the Kyocera website at www.kyocera-wireless.com/support.

If you forget your Wireless Security Password, you will have to reset the modem back to the defaults. See the included Quick Start Guide for instructions on this.

Hele on!

Troubleshooting

Cannot connect to router via the cable for programming

Blue LAN cable may not be plugged into

1. For initial programming, the supplied blue LAN cable from the yellow LAN port #1 on the back of the router to the LAN connector on your computer.

On MAC there is no AirPort icon

AirPort icon needs to be turned on

- Open Network preferences, click on the AirPort in the left hand listing of Networks, check the “Show AirPort status in menu bar”.

Cannot connect to router via Wi-Fi

The computer may not have a Wi-Fi modem or it may not be turned on.

- Make sure that the wireless modem in the computer is turned on. Sometimes this is a physical switch on the outside of the computer or has to be turned on via software.

WLAN on router may not be turned on

- On the back of the router is a switch labeled ON/OFF. This must be ON for the Wi-Fi to work.

Can connect to router via Wi-Fi but cannot connect to internet.

After plugging in the Hele USB card and going through about 30 seconds initialization, the EVDO light on the router should be green. If it is yellow, it means that the card is not connected. Check:

1. Card has already been activated.
2. Card is plugged into router and NOT computer.
3. Card has RF signal (green light on card should be on and flashing. Follow instructions in Kyocera QuickStart Guide for checking signal strength.)
4. The correct Username and password of the card has been entered into the router on the Basic>WAN tab. Username must be <your MDN>@mobipcs.com.
5. A security level of GOOD, BETTER, or BEST has been selected and is not NONE.

When trying to connect via Wi-Fi to the router the connection just stays on “Acquiring Network Address”.

Username and/or password for the card may be incorrect

- Check that the correct Username and password of the card has been entered into the router on the Basic>WAN tab. Username must be <your MDN>@mobipcs.com.

Router keeps saying invalid password when entering Administration login

The administration login has been changed and is no longer the default. Follow Reset instructions on enclosed instructions with the router. You will have to completely go through installation again on router (these instructions)